

Color Layer Studies

Mark-Making with Enamel

1. Opal white over transparent over opaque white
2. Opaque Painting
3. Modeled Relief underlayer: create relief through buildup or carving with diamond burr
4. Pointillism using frit/lump pieces
5. Salt & Pepper color mixtures
6. Watercolor “salt” effect using large lumps of flux
7. Wireless enamel to create lines and shapes
8. Drill & Fill
9. Underpainting with opal white over
10. Transparents over opaques
11. Seed Beads & glass/enamel balls
12. Threads
13. Underglaze P3
14. Oxides
15. Ceramic Decals
16. Scrafitto using fine ground enamel with oil
17. Bubble Through Effect
18. Modeled transparent layer

Color Planes

Solid
mottled
shaded
speckled
patterned
textured
shapes within shapes
color combinations/color wheel

Enamel Color Layers

You can layer different types of enamel over one another in different ways to create unique effects

Transparents over Transparents

Transparents over Opaque

Opalescents over Opaque

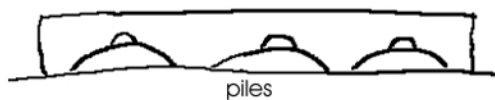
Opalescent over Transparent

Opalescent over Transparent over Opaque

Opaque over Transparent

Opaque over Transparent

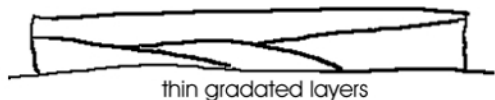
Some Layering Options



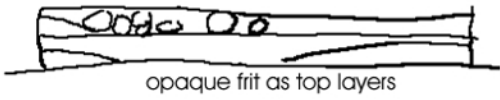
piles



short wirework



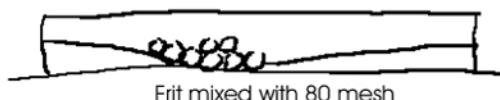
thin gradated layers



opaque frit as top layers



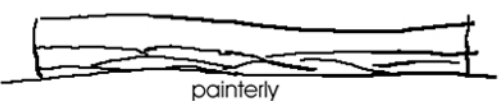
enamel Shaping



Frit mixed with 80 mesh



seed beads



painterly



textured foil elements



drill and replace with new colors



silver/gold granules



glass beads

Enamel Layer Options

Design Choices

Metal Background

Type of Metal: fine silver, copper

Textured or plain

Methods of Texturing: roller print, engrave, stamp, chase, cast, scribe, melt

Opaque Enamel Base

Enamel Choice: Color (hue), Value (how dark or light it is)

Depth: even layer or modeled

Number of colors: one or more colors

Edge Treatment: how two colors meet (sharp or feathered)

Textured: one color or colors mixed together (salt & pepper)

Transparent Enamel Base

Enamel Choice: Color (hue), Value (how dark or light it is)

Depth: even layer or modeled

Number of colors: one or more colors

Edge Treatment: how two colors meet (sharp or feathered)

Textured: one color or colors mixed together (salt & pepper)

Light: does light come through from reflective surface underneath?

Foils

Type of Foil: fine silver, 24 k gold, hand-made

overall effect or pattern

Layer Placement: when are you adding foil layers

Shape of Foil Elements: shape, movement, edges, direction,

Transparent Overlays

Single Color

Gradated Colors

Painted Shapes

Lump Pieces

Opaque Overlays

Single Color

Gradated Colors

Painted Shapes

Lump Pieces

Sifted (stencils or scrafitto)

Enamel Removal

Diamond Carving tools to carve/remove enamel

Inclusions

Threads & Lumps

Beads (glass seed beads)

enamel balls (purchased or hand made)

Enamel Shards (broken off chunks of enamel)

Decals

Underglaze (P3 Black)

Metallic Lusters (gold/silver pens)

Color Studies

1). “What if....?”

Play with enamel and enamel layers

Ask yourself what will happen if you try something different.

Ask yourself what else you can do

2). How do I translate...?

Look at an image and think of it
as layers.

Start with the lowest layer and imagine building up enamel color from the bottom.

Come up with a Plan or series of Plans.

What is my intent/goal?

What are some ways of achieving this?

How can I break the study into smaller, more efficient parts?

What do I already know so that I don't waste time repeating this?

What exactly do I want to discover?

What will be my Plan?

Do I have a hypothesis of what will happen?

What were the results?

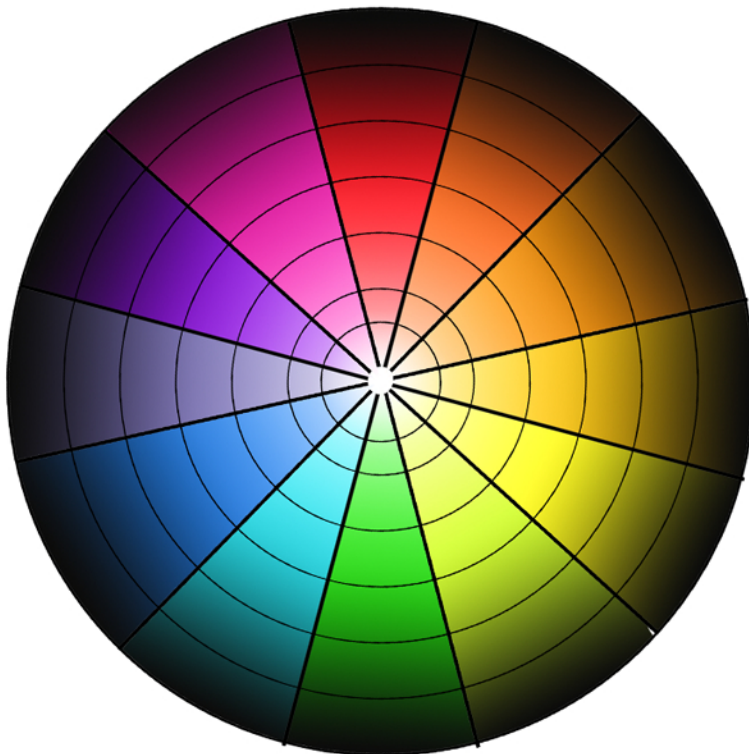
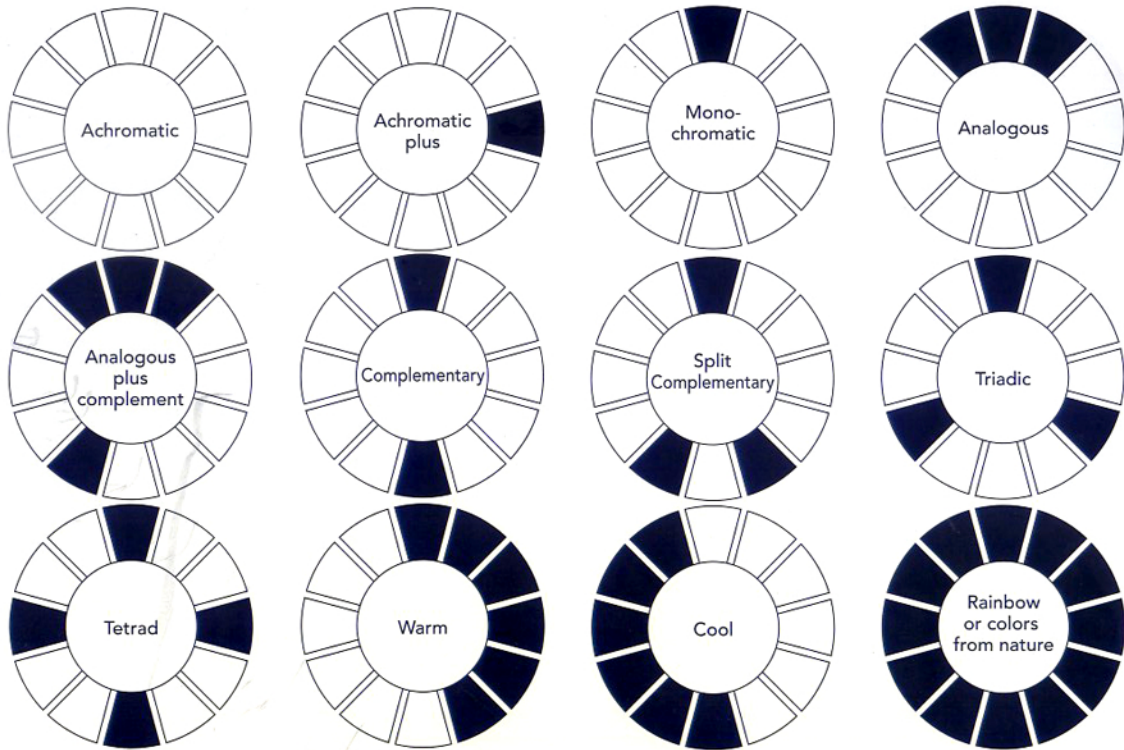
What changes could I make to achieve a different result?

What was the result of the changes I made?

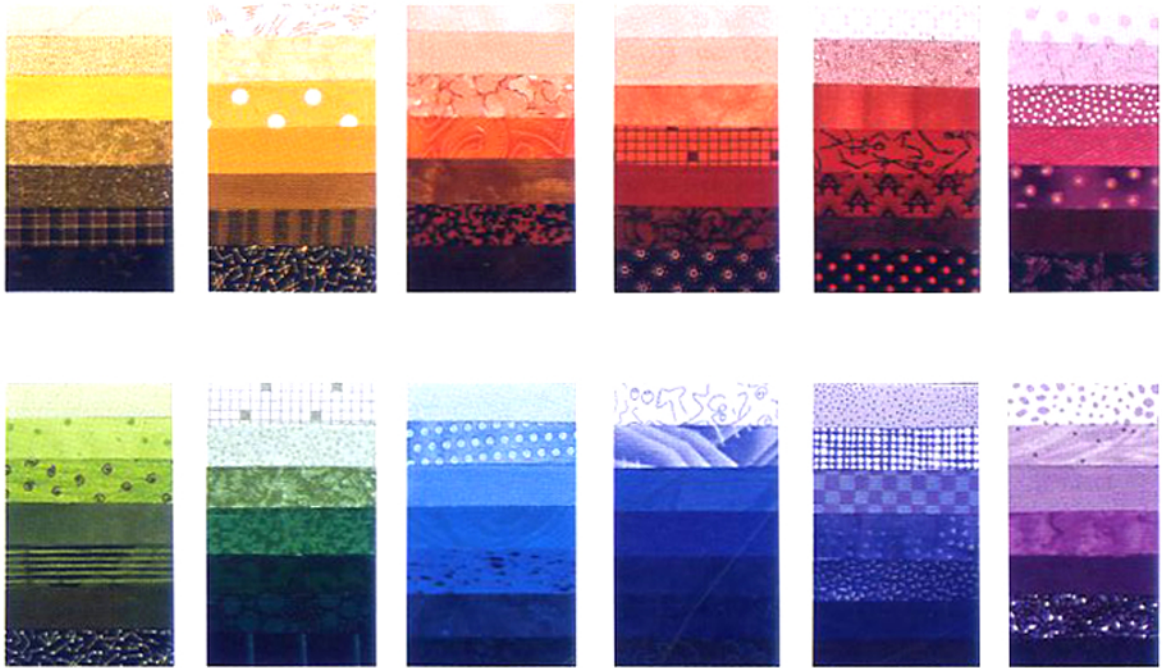
How would I do it differently in the future?

Does this study lead me into a new direction or raise new questions?

Color Schemes*



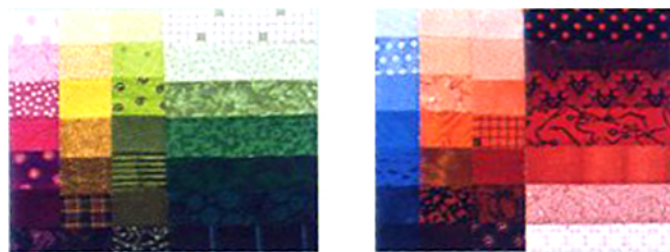
*from Design Explorations for the Creative Quilter by Katie Pasquini Masopust



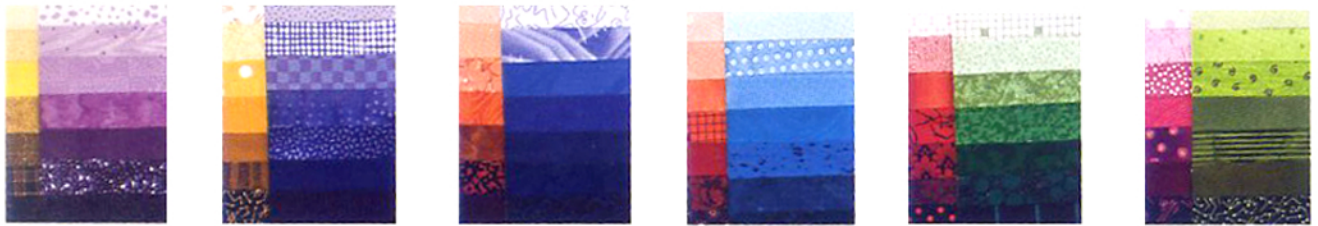
monochromatic



Analogous



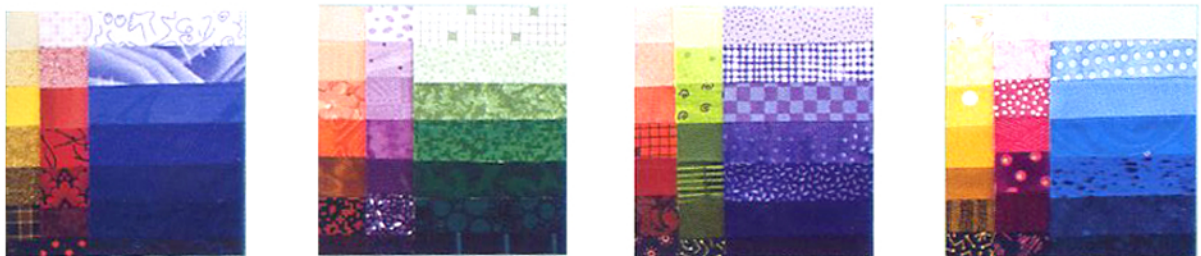
analogous plus complement



complementary



split complementary



triads



tetrads

Variations on Using Foil & Transparents

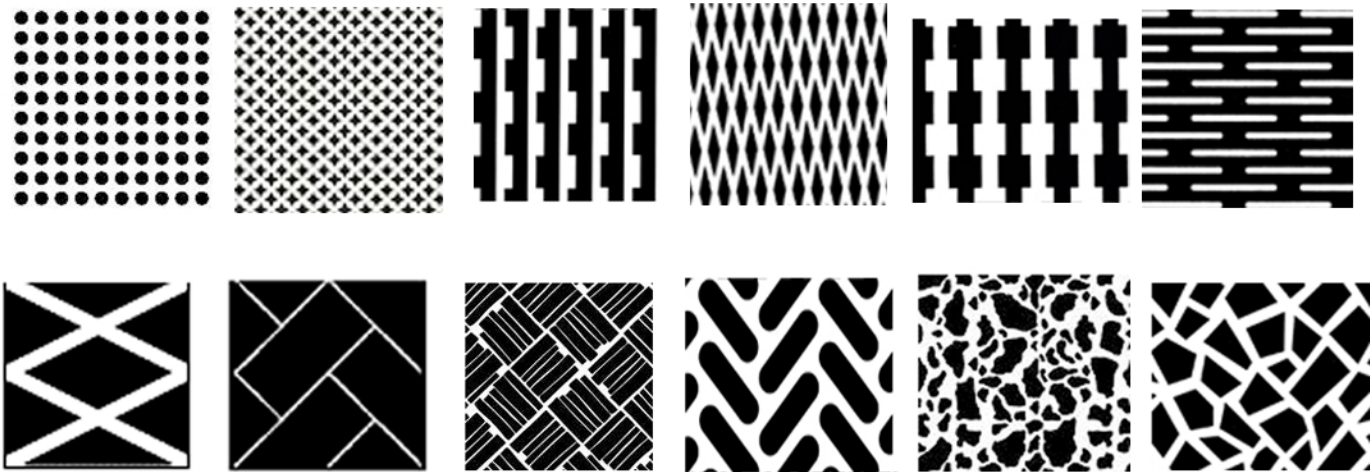
Variation 1: Create a Foil Pattern

1. Use regular or scrapbooking scissors to cut foil shapes. Place a piece of foil between two pieces of paper to make it easier to make precise cuts when necessary.
2. Use punches to create shapes
3. make a variety of sizes and shapes. experiment with what is possible.
4. Glue foil pieces on enameled surface to create a pattern.
5. Experiment with different enamel base coats (opaque, transparent, different colors)
6. Fire Foil in place, and then paint a single color over foil and fire enamel to glossy.
7. Apply two or more transparents over foil pattern
8. Use different transparents on second layer

Variation 2: Create several layers of foils and colors

1. Cut and fire a pattern of fine silver foil
2. Paint and fire a thin layer of a single transparent color
3. Apply another layer of silver foil and fire
4. Paint and fire another layer of a single transparent color
5. Apply another layer of foil
6. Paint and fire another transparent color only over the last foil layer
7. Paint a thin layer of flux over the lower areas of your piece and fire to glossy.

Variation 1 Sample Patterns: One Layer of Foil



Variation 2 Sample Patterns: Several Foil & Color Layers



Scrafitto Design

